

gravel

**RESOLUTION NO. 04 - 81**

**RESOLUTION EXPANDING THE BOUNDARIES OF RURAL SPECIAL  
IMPROVEMENT MAINTENANCE  
DISTRICT #682M  
NORTHHILLS ESTATES SUBDIVISION**

WHEREAS, the Board of County Commissioners of Yellowstone County, Montana met in regular session and executed a Resolution of Intent to Expand Rural Special Improvement Maintenance District #682M, Northhills Estates Subdivision, as described in Exhibit A and more particularly shown in Exhibit B (map) and,

WHEREAS, it appears that Lots 1 and 2, Block 1; Lots 1 through 3, Block 2 of Foos Subdivision; The Remainder of Certificate of Survey no. 2496; Amended Plat of Lot 1, Northhills Estates, Second Filing - Lots 1 through 12, Block 1; Lots 1 through 12, Block 2; and Lots 1 through 4, Block 3 should be included in RSID 682M and that the boundaries of RSID 682M should be expanded to include the lots in Foos Subdivision and Remainder of Certificate of Survey no. 2496 and the Amended Plat of Lot 1, Northhills Estates, Second Filing - Lots 1 through 12, Block 1; Lots 1 through 12, Block 2; and Lots 1 through 4, Block 3; and

WHEREAS, pursuant to 7-12-2161(4), MCA, the Commissioners have the power of changing, by resolution, the boundaries of any maintenance district no more than once a year; and

WHEREAS, the boundaries of RSID #682M have not been changed within the last year; and

WHEREAS, the Board of County Commissioners finds, determines and declares that:

1. The public interest or convenience requires the expansion of a Rural Special Improvement Maintenance District as hereinafter described;
2. The costs of providing maintenance shall be borne by owners of the property included within the boundaries of the Rural Special Improvement Maintenance District with all existing and future lots being assessed an equal amount on a per lot basis;
3. The purpose of expanding the District is to provide for the maintenance, preservation and repair of the streets located within the boundaries of this District;

NOW, THEREFORE, BE IT RESOLVED by the Board of County commissioners of Yellowstone County, as follows:

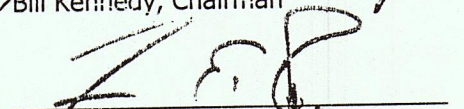
1. The Commissioners have acquired jurisdiction to expand Rural Special Maintenance District No. 692M to provide for the maintenance, preservation and repair of the streets. The maintenance costs are more particularly described in Exhibit C. The estimated costs shown do not preclude other eligible street maintenance expenditures.

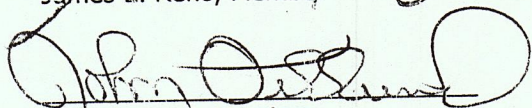
2. All of the costs of the District shall be assessed equally on a per lot basis for all existing and future lots. The boundaries of this District are hereby expanded to include Foos Subdivision - Lots 1 and 2, Block 1; Lots 1 through 3, Block 2; The Remainder of Certificate of Survey no. 2496; Amended Plat of Lot 1, Northhills Estates, Second Filing - Lots 1 through 12, Block 1; Lots 1 through 12, Block 2; and Lots 1 through 4, Block 3 as shown on the map attached as Exhibit B and described in Exhibit A.

PASSED AND ADOPTED by the Board of County Commissioners of Yellowstone County, Montana, this 31<sup>st</sup>, day of August, 2004

BOARD OF COUNTY COMMISSIONERS  
YELLOWSTONE COUNTY, MONTANA

  
Bill Kennedy, Chairman

  
James E. Reno, Member

  
John Ostlund, Member

(SEAL)  
ATTEST:

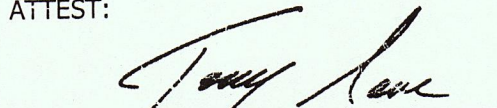
  
Tony Nave, Clerk and Recorder  
Yellowstone County, Montana



EXHIBIT A

May 18, 2004

Board of County Commissioners  
Yellowstone County  
P.O. Box 35000  
Billings, MT 59107

Reference: RSID 682M Boundary Expansion

Dear Commissioners:

We, the undersigned, do hereby respectfully request that the boundaries of RSID 682M be expanded to include the following properties which are shown on Exhibit "A" attached hereto:

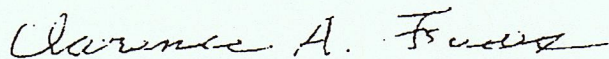
Foos Subdivision – Lots 1 and 2, Block 1; Lots 1 through 3, Block 2

The remainder of Certificate of Survey No. 2496

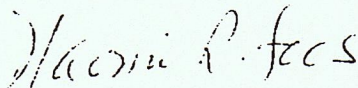
Amended Plat of Lot 1, Northhill Estates, Second Filing – Lots 1 through 12, Block 1;  
Lots 1 through 12, Block 2; and Lots 1 through 4, Block 3

This request is for the purpose of satisfying conditions of plat approval for both Foos Subdivision and the Amended Plat of Northhill Estates, Second Filing, which required that a Rural Special Improvement District be created to maintain the new roads that serve these subdivisions. The existing boundary of RSID 682M currently abuts the aforementioned subdivisions; therefore, we are requesting that this boundary be expanded to include these proposed subdivisions.

Respectfully yours,



Clarence A. Foos



Naomi R. Foos

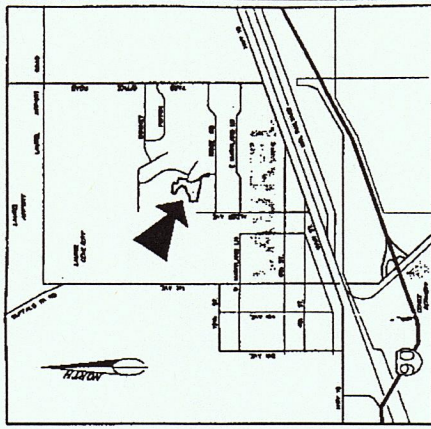
encls

/jnp

P:C:95006\_02\_Commissioners 01



EXHIBIT B



PROPOSED  
RSID-M  
682  
BOUNDARY  
EXPANSION  
(TYP.)

